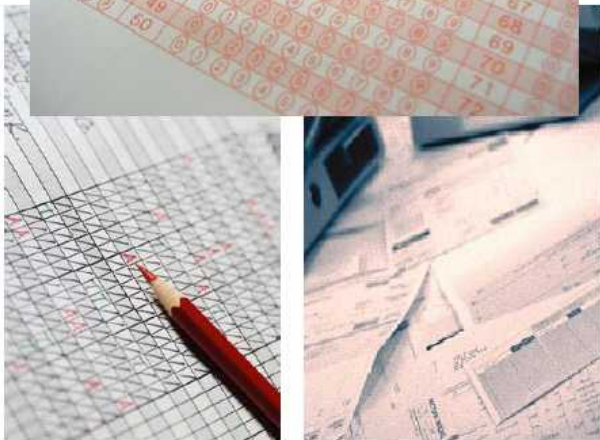
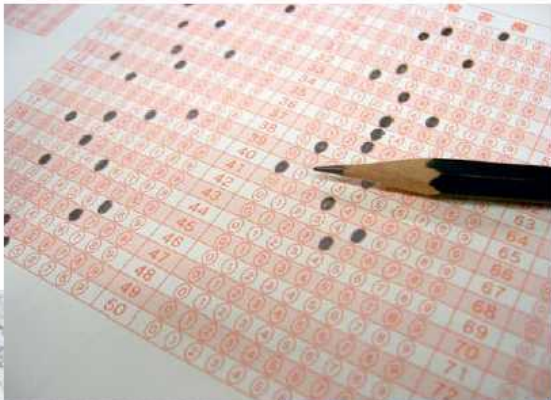


# SEKONIC

Optical Mark Reader

# SR-1800

**NEW**



## Application

### Education:

Classroom Testing, Scoring,  
Analyzing Student Performance,  
Educational Administration,  
Student Surveys,  
Course and Instructor Evaluations  
Attendance Tracking

### Medical:

Health Risk Analysis, Patient Billing,  
Wellness Tracking, Clinical Evaluations  
Electronic Medical Records

### Business:

Customer Satisfaction Surveys,  
Personnel Evaluation  
Employee Satisfaction Study,  
Quality Control Feedback, Elections

### Specifications

Read Sensor	Read Head	1 (Single side) or 2 (Dual Side)
	Mark Discrimination	16 steps (256 Degrees)
	Light Source	Infra Red Ray (940nm) or Visible Red Ray(660nm)
	Mark Implements	Infra Red Ray: Pencil, Visible Red Ray: Pencil + Pen
	Read head Channels	1/6 inch (48 Channels)
	Mark Shapes	Rectangle Ovals and Circles
	Read Technique	Reading Reflective Sensor
Connect with PC (Interface)	USB (2.0) or RS-232C (9 pins 9,600 to 115,200bps)	
Equipment Control	Display	LED ( 2 LEDs "READY" & "ERROR" )
	Operation Button	2 (START / CLEAR)
Form Input	ADF (Hopper)	Approx. 50 forms
Scanning	Form Width	63.55 to 228.60 mm (2.5 Inch to 9.0 Inch)
	Form Length	110 to 355.6 mm (4.3 Inch to 14.0 Inch)
	Number of Rows	108 Rows
	Number of Columns	48 Columns
	Mark Position	Under 5,184 Mark Positions
	Paper Weight	72 to 135 kg (0.11 to 0.19 mm / 84 to 157 g/m2)
Throughput speeds	*Approx. 1800 forms / hour	
Form Output	Stacker	100 forms
Power	Voltage / Relatives	AC100V 50/60Hz to 240V 50/60Hz AC Adaptor: Input 24V 2.1A
Conditions	Temp / Humid	5 to 35°C(41 to 95° F) / 30 to 80%
Dimensions	W x H x D (mm, Inch)	328 x 128 x 731 mm (in Operation) / 328 x 128 x 390 mm (Footprint) 12.9 x 5.0 x 28.7 Inch / 12.9 x 5.0 x 15.4 Inch
Noise	Under 60 db	
Weight	Approx 4.9kg (10.8Lbs)	
Accessories	CD-ROM (User Manual, USB Driver, API, Diagnostic utility software) Power cable (AC Adaptor), USB cable	

\*Throughput speeds may vary depending on your application software, operating system and PC specification.

### Introduction SR-1800



#### ■ Card to Letter, Legal, A4

Applicable from Card to Legal.

Form Width: 63.55 to 228.60mm  
(2.5 to 9.0 Inch)  
Form Length: 110 to 355.6mm  
(4.3 to 14.0 Inch)

#### ■ Compatible SEKONIC OMR's

Compatible with

SR-601, SR-607, SR-730  
(RS-232C)

SR-2300, SR-5500,  
SR-3500, SR-6500

(USB / RS-232C)

## Easy to Control, High Accuracy, High Performance, and High Reliability

*OMR Technology can ONLY capture the data of "Black" and "White" on the OMR form  
Easier, Simpler, more Accurate than Image scanner*

#### ■ Accurate Data Capturing

① Detection Mark Density : to capture the data correctly.  
(256 degrees - 16 steps of Discrimination)

This function provide automatic detection to select the most darkest marking in each fields.

② SR-1800 has function to eliminate Double feed, and No feed detection to capture data correctly.

#### ■ USB Connection is provided as well as Serial Port



For DESKTOP  
NOTE  
LAP TOP  
PALM PC!!

#### ■ DESKTOP OMR (Light Weight, Compact Footprint)

Only 4.9Kgs (10.8lbs) of weight, and 328 x 128 x 390mm (12.9 x 5.0 x 15.4 Inch) of footprint provides flexibility and portability in spite of feed A4, letter, legal size form.

#### ■ Approved and Compliant with Current Worldwide Environmental Regulations

Approved : UL / VCCI / BSMI / FCC / MIC  
Compliant: CE / RoHS

#### ■ Easy to Maintenance, Cleaning each section

■ Available to use various Software for SEKONIC OMR's,  
or Easy to develop for your Own application software

## SEKONIC CORPORATION

7-24-14, Oizumi-Galuen-cho, Nerima-ku, Tokyo, 178-8686, JAPAN

PHONE: +81-3-3978-2335

FACSIMILE: +81-3-3978-5229

<http://www.sekonic.co.jp/english>

<http://www.sekonicusa.com>



\*Features and Specifications are subject to change without prior notice.

